

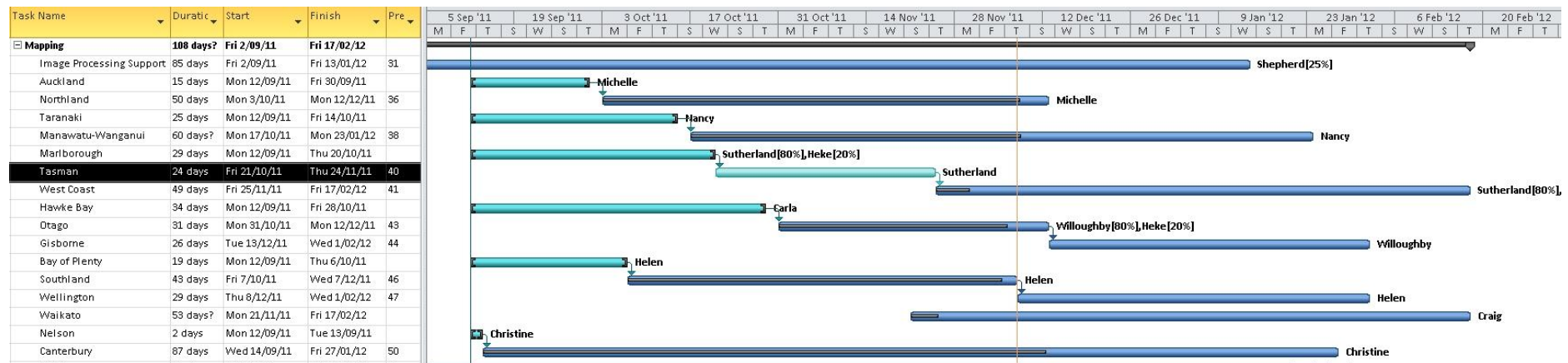
## LCDB-3 Mapping – progress summary 8 Dec 2011

Six regions released for stakeholder verification – Auckland, Taranaki, Marlborough, Tasman, Hawkes Bay, Bay of Plenty, Nelson

Northland, Otago and Southland will be compiled and ready for stakeholder verification by Christmas

Currently we are running a 7<sup>th</sup> mapping line to enable an early start on Waikato (which looks like being one of the more demanding regions).

Progress generally satisfactory for a early-mid Feb completion of all initial compilations.



We are encountering several areas where (in its earlier revisions) LCDB appears to have been compiled over poorly ortho-rectified imagery – probably aerial photography. Areas affected include; S Westland, NW Southland, W Otago, and patches in Manawatu and Hawkes Bay. Positional errors of about 80m have been observed. Where this was noticed prior to compilation (S Westland) we have rubber-sheeted the affected areas to their true position, but elsewhere we have unknowingly embedded new, positionally-accurate mapping amongst positionally-inaccurate polygons.